



# Professional Plaques Catalog

CHRISTOPHER JAMES COFFLAND  
WHO SACRIFICED HIS LIFE DURING  
OPERATION ENDURING FREEDOM  
AFGHANISTAN

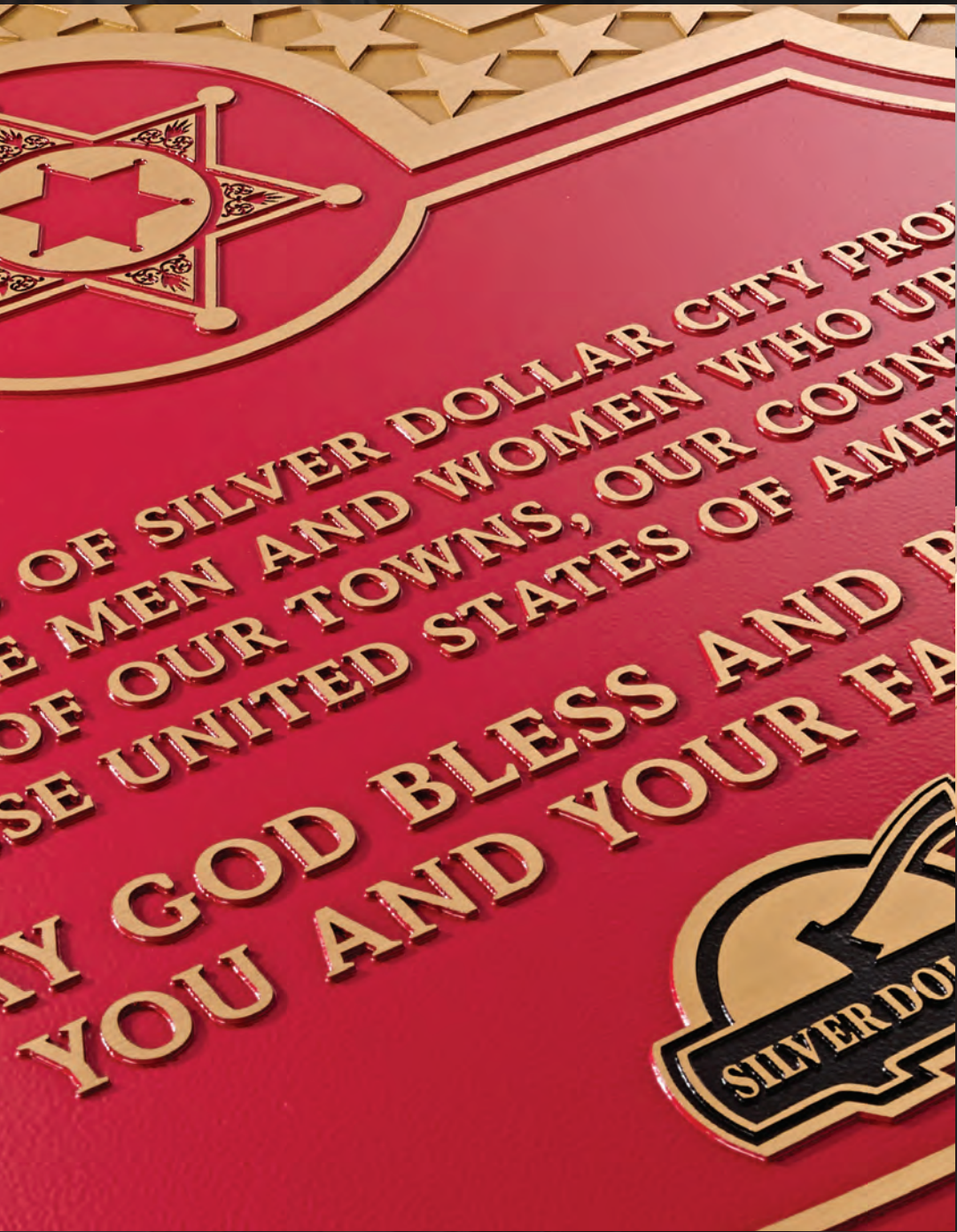


OSMONT



*Made True.*









**GEMINI INCORPORATED**

103 Mensing Way  
Cannon Falls, MN 55009-1143 USA  
www.GeminiSignProducts.com

**USA**

**1-877-877-2922**

plaques@GeminiSignProducts.com  
Monday–Friday: 7 a.m.–7 p.m.  
Saturday: 8 a.m.–noon (Central)

**CANADA**

**1-800-265-0426**

canada@GeminiSignProducts.com  
Monday–Friday: 7 a.m.–8 p.m.  
Saturday: 9 a.m.–1 p.m. (Eastern)

**INTERNATIONAL**

**1-507-263-3957**

sales@GeminiSignProducts.com  
Monday–Friday: 7 a.m.–7 p.m.  
Saturday: 8 a.m.–noon (Central)

*Gemini products are only sold through sign professionals and graphics resellers.*

**GeminiSignProducts.com**

Access our Partner Portal section for online design tools, material specifications, instructional videos, order forms and more.

**Username:** Your phone number (no dashes)

**Password:** Your customer number



All Gemini products are built to last and guaranteed for life.



**CAST & PRECISION TOOLED**

Gallery	4
Seals & Emblems	6
Specialty Options	7
Thin Gauge	8
Portrait & Image Options	9
Borders	11
Finish Options	12
Mounting	14



**HIGH DEFINITION**

Gallery	15
Laser Engraved	19
Etched Graphic Options	20
Etched Mounting Options	21



**WAYFINDING / ADA**

Gallery	22
Thin Gauge ADA	26
Standard ADA	28
Full Color Giclée Panels	29



**ACCESSORIES**

Beveled Edge Plaque Frames	30
Cast Aluminum Plaque Blanks	30
Cast Acrylic Sign Blanks	31
Decorative Stand-Off Mounts	32

**ADDITIONAL INFORMATION**

Lifetime Guarantee	33
FAQs	34



## CAST & PRECISION TOOLED PLAQUES



### Classic & Permanent

For a sense of permanency and architectural depth, consider the classic look of Gemini cast and precision tooled bronze, brass or aluminum plaques, logos and emblems. Ideal for professional offices, university and government buildings, and commemorative uses, these plaques are available in 16 different finishes, including polished, painted or oxidized. Using only the purest, lead-free alloys, Gemini's cast and precision tooled plaques are available in various depths.

For added detail and dimension, a bas relief casting can be added to your commemorative plaque. Working from a clay mold based on your submitted photograph, Gemini's skilled craftsmen will create a raised likeness of your image and cast it for attachment to your plaque.







1



2



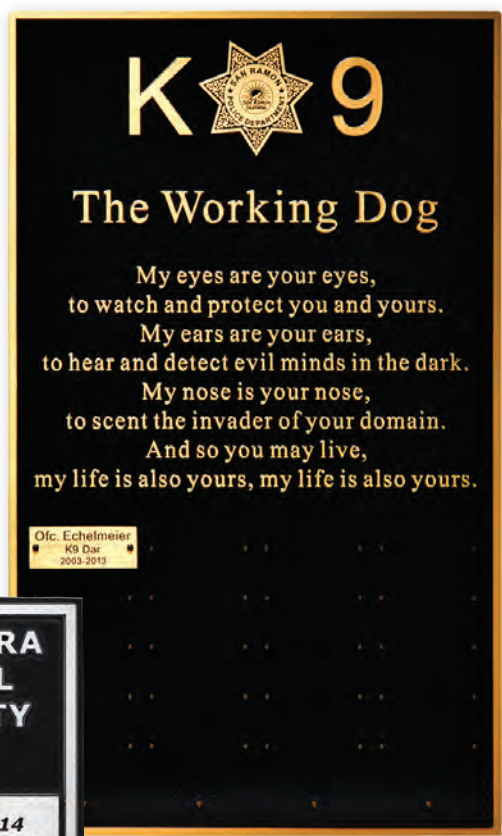
3

**Advantages in using Gemini Plaques & Panels:**

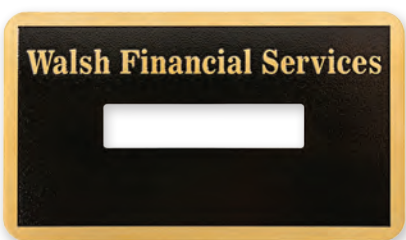
- Specialized sales force ready to provide you with rapid response and great customer service
- Convenient on-line estimating tool available at [GeminiSignProducts.com](http://GeminiSignProducts.com) to provide you with rapid order prices
- No rush charges or extra surcharges
- Superb quality and competitively priced
- Your one source for all your plaque needs



4



7



5



6

1. Cast aluminum, stipple texture, multi-color paint, 30" diameter. 2. Painted aluminum, bead blasted texture, single line border, 12" x 10" 3. Precision tooled 1/4" brushed aluminum, blue stipple texture, recessed text, 15" x 9". 4. Brushed bronze, brown pebble texture, 54" x 48". 5. Brushed bronze, black pebble texture, custom single line border, with cut-out center, 15" x 9". 6. Cast aluminum, inset single line border, black pebble texture, raised & recessed copy, 8" x 10". 7. Brushed brass, black pebble texture, single line beveled border, etched logo, individual plates attached, 15" x 24".



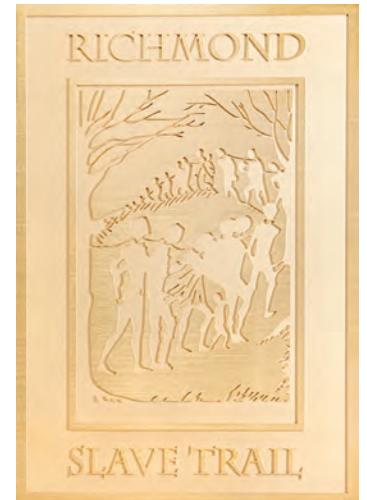
## Military & Government Seals

Gemini offers special pricing on cast seals in the most common military and government designs (including Army, Navy, Air Force, Marines, Coast Guard and Merchant Marines). Other seals can be manufactured at the seal pricing with an additional pattern charge. Multi-color seals can also be produced with an additional charge. Contact Gemini for more information about available seal designs and options.



## Integrated logos & emblems

Gemini has the capability to add a custom emblem or logo to your plaque in one of two ways. The emblem or logo can either be cast as part of the plaque, or crafted as a separate etched piece and attached to the plaque. Image detail is somewhat limited by the manufacturing process when cast, but the cost is included in the price of the plaque. There are nearly no detail restrictions with an etched emblem; however, additional charges will apply.



1. Brushed bronze, black pebble texture, precision tooled logo & etched insert, 24" x 36". 2. Multi-color painted aluminum, single line border, blue stipple background, 36" diameter. 3. Brushed bronze, natural bead blasted texture, precision tooled, 7" x 10". 4. Brushed cast bronze, black leatherette texture, 15" x 9"



## Specialty Options

### Large Return Plaques

For applications where extra depth is desired, Gemini can manufacture plaques with a larger return. Our large cast return plaques feature an edge depth of 3/4" to 4", instead of the standard 1/4" to 5/16" depth.

### Double-sided Plaques

In some instances, such as a plaque that will be hung from the ceiling rather than mounted flat to a wall, both sides of a plaque will be visible. In such cases, a double-sided plaque may provide a more elegant look. Double-sided plaques feature a standard face, but have a finished back side that is a mirror image of the front (or a different design). Maximum size is 26" x 50".

### Plaque Rejuvenation

After years of exposure, your plaque will show signs of aging. Bronze plaques will begin to patina, while aluminum plaques will lose their raw aluminum appearance and will develop an oxide skin on the surface of all exposed aluminum. If you would like to bring your existing plaque back to life with a fresh background coating and new brushed satin raised copy, Gemini's rejuvenation program may be for you. Please call Gemini and send us a photograph of your plaque's current state, because not all plaques can undergo this treatment.

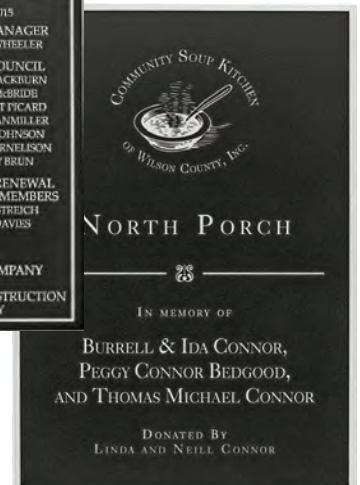


Double-sided plaque



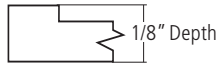
## Thin Gauge Plaques

Gemini's thin gauge plaques are a lower cost option than standard precision tooled or cast. Our precision milling of aluminum, brass, bronze and copper produces high quality plaques in 1/8" thick material. These plaques have the same lifetime warranty as Gemini's other plaques. Gemini can provide you with significant cost savings. Maximum size, 24" x 24".

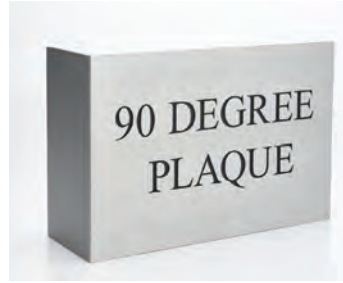




## Thin Gauge Plaques



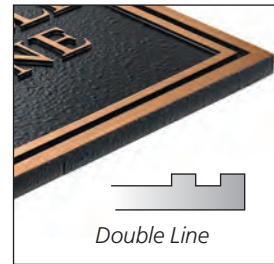
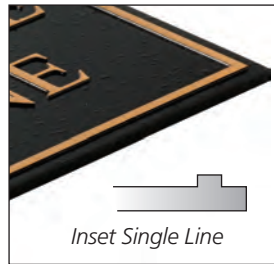
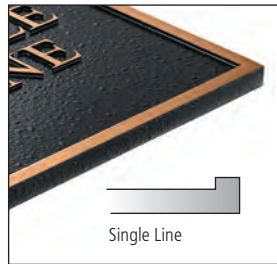
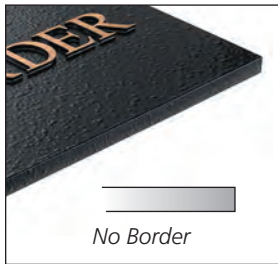
Our precision milling of aluminum, brass, bronze and copper produces high quality plaques in 1/8" thick material. These plaques have the same lifetime warranty as Gemini's other plaques.



Optional 90° bend available. Recessed copy only. Call for quote.

## Standard Borders

Other borders see page 16.



## Background Colors

Other standard painted colors shown on page 13. Custom colors available.



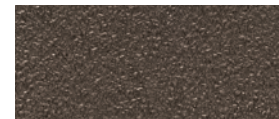
Black



Dark Oxide



Brown

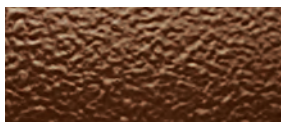


Duranodic Bronze

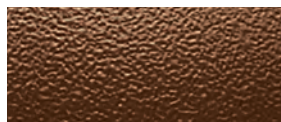


Edge color matches background color

## Background Textures



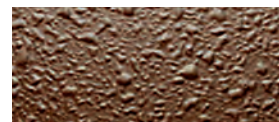
Leatherette



Stipple

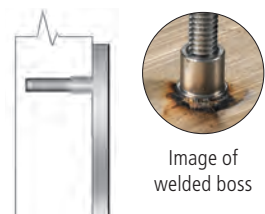


Sand



Pebble

## Mounting Options



**Blind Mount (Type A, Stud Boss Mount)**



**Solid Wall Mount (Type B)**



**Hollow Wall Mount (Type C)**



**Wood Mount (Type D)**

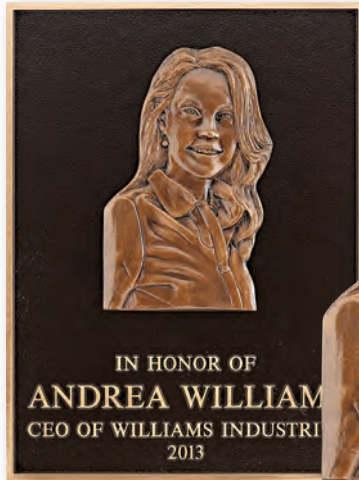


**Double Face Tape Mount (Blind Mount)**

Strips of very high bond tape are applied to the back of the plaque. Interior use only.



## Portrait & Image Options



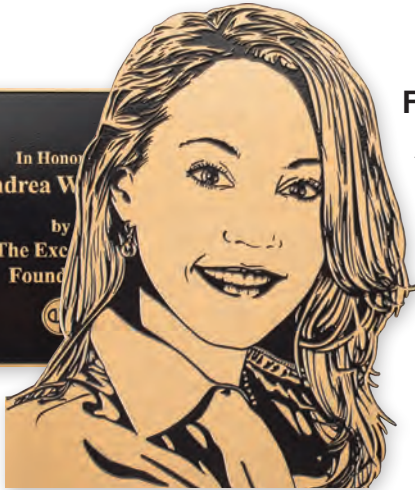
### Bas Relief

We start with a photograph. (Although we can use almost any quality photograph, the better the image, the better the modeling effort.) The finished image will be an artist's interpretation of your photograph. An image of the clay model is sent to you via email for your comments or approval. When approved, the clay model is used for the bronze and aluminum casting process. The bas relief is mechanically attached to the plaque background. (Standard overall height of 4" to 24" with a finished depth of 3/4" to 1". Requires a six-week lead time.)



### Flat Relief

An alternative to the expense and time-consuming process of bas relief, Gemini's flat relief images are two-dimensional options that are part of a precision tooled plaque. The process starts with a good quality photograph or illustration from which our craftsmen create a black and white rendering. Suitable for interior or exterior applications, they perfectly fit the bill when your project requires a portrait but the budget won't allow for bas relief.



### PhotoRelief™

A seamless blend of casting and photography, PhotoRelief™ is perfectly suited for unique signage, historical markers, or any plaque that needs to tell a story with words and pictures. Through Gemini's innovative technologies, we can use one or more photographs to create a simple and elegant plaque or a breathtaking collage that illustrates the saying "a picture is worth a thousand words."



**Etched Portrait on Metal**

The etching process allows you to forever replicate your photograph, line drawing or complex artwork in beautiful detail. This method utilizes a halftone dot pattern made from a 50-line screen. Halftone portraits resemble newspaper photographs, and have visible dot patterns. The etched, recessed dots are filled with black ink to contrast with the brushed finish of the metal background. The best photographs for halftone etched portraits have high contrast tones with bright white areas, dense black areas and minimal gray tones. (Photos that are monotone or have muted colors will produce poor halftone etchings.) Halftone etchings are available in stainless steel, bronze, brass and copper.



**Giclée Print on Metal**

Giclée (pronounced "zhee-clay") is the term for high quality reproductions of works of art utilizing high-resolution inkjet printers. Gemini can use this process to apply your images as inserts or direct print on metal, into your cast or precision tooled plaques. Our giclée prints render UV-cured, non-elastic inks at up to 1200 dpi resolution.

The combination of our high-resolution printing, abrasion-resistant clear coat and premium base materials results in a picture perfect product that is excellent for all indoor applications and even some exterior ones.



**Oval, Round & Rectangular Ceramic Inserts**

Inserts bases are available in 19 different sizes. A photograph is scanned at 1200 dpi resolution and applied to the blank. A clear glaze is applied over this transfer and the insert is fired in a kiln.



**Laser Engraved Polished Black Granite**

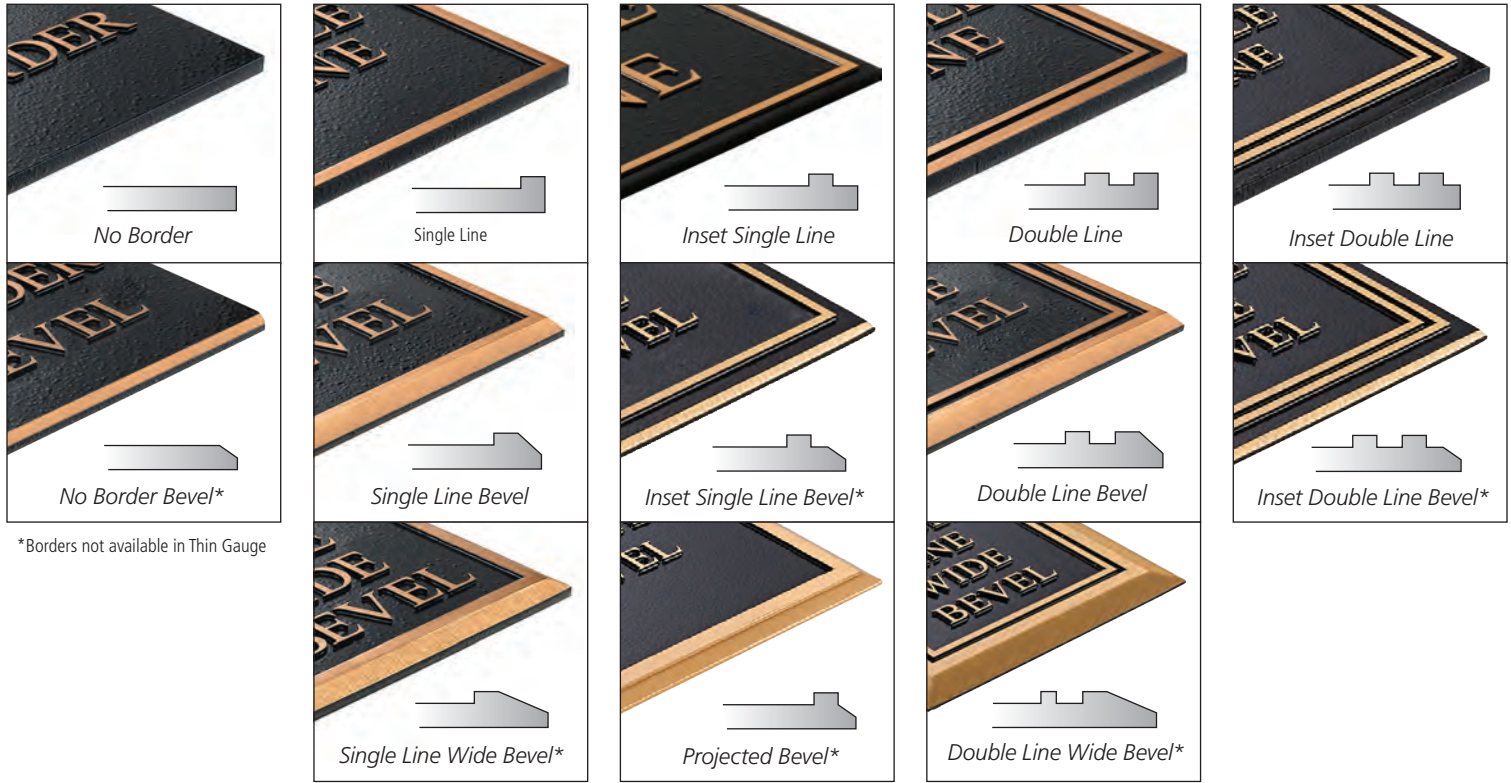
Gemini can engrave your artwork or copy onto polished black granite, which is suitable for interior or exterior applications. Choose from 11 common shapes and sizes as the base material. Utilize the six rectangle or square sizes in tandem to produce artwork over a larger surface area than our maximum single piece size of 18" x 24".





## Standard Borders

Border finish matches plaque artwork. Other borders are also available. Please call for a quote. (Illustrations not to scale) Edge color matches background color.



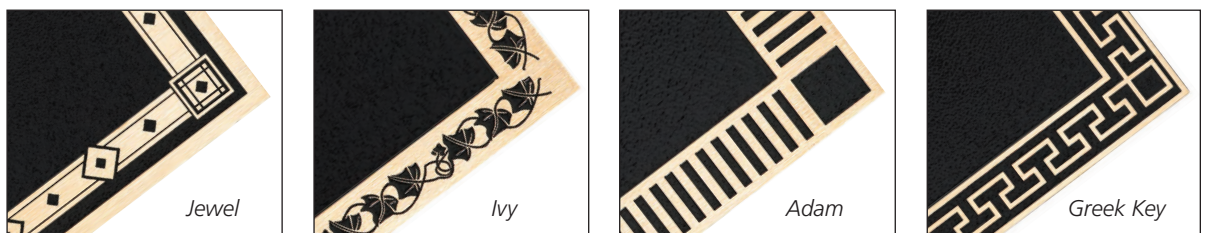
\*Borders not available in Thin Gauge

## Custom Borders

These are some of our standard decorative borders. Other borders are also available. Please call for a quote. Cast sculpted borders also available.



ex. Sculpted Cast



## Background Colors

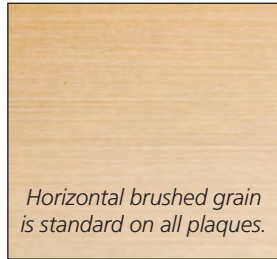
Other standard painted colors shown on page 13. Custom colors available.





## Standard Finish Options

### Brushed Finish



### Edge Color



### Clear Coat Options



Satin is standard on brushed finishes. Gloss is standard on polished finishes. Matte is standard on PhotoRelief™, wayfinding & giclée. Clear coat for harsh environments is also available upon request at no charge.

## Specialty Finish Options

### Bronze Finishes

Finish-matching available on oxidized.



Light Oxidized



Oxidized



Dark Oxidized



Flash Bronze  
Interior Applications Only



Verde Patina\*



Turquoise Patina\*



Green Patina\*



Raised Painted Copy

\*All patinas, by their very nature, will vary from plaque to plaque and order to order, and will change over time. Patina finishes may "bleed" onto the installation surface when installed outside.

### Polished Finishes



Polished Bronze



Polished Brass  
Precision Tooled Only

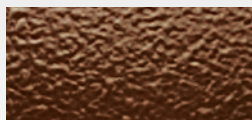


Polished Aluminum  
Precision Tooled Only

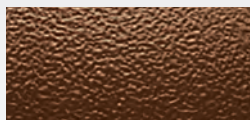


Buffed Aluminum  
Cast

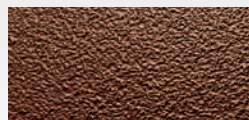
## Background Textures



Leatherette



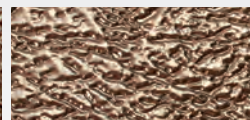
Stipple



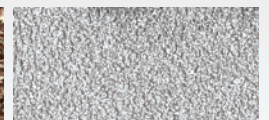
Sand



Pebble



Classic Leather  
(cast only - 28" x 48" max.)

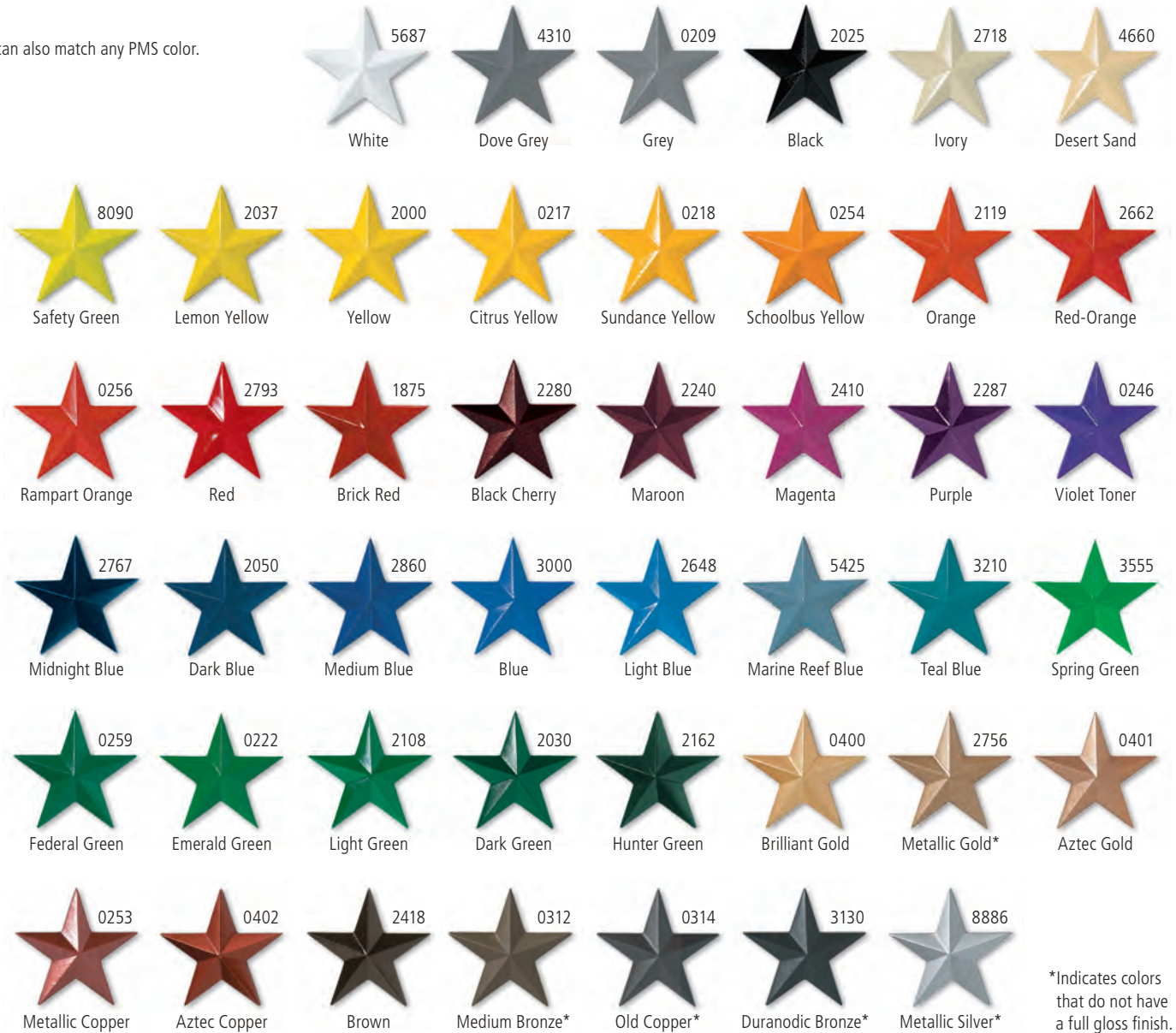


Bead Blasted  
(36" x 36" max.)



## Paint Colors

Gemini can also match any PMS color.



\*Indicates colors that do not have a full gloss finish.

## Letter Styles

Below are some of the most common typestyles seen on plaques today, but you may choose from any standard Gemini typestyle listed in our main catalog. Using Gemini Times New Roman, Bookman Old Style or Myriad, minimum height is 1/4" for letters in all uppercase, 3/8" for text that uses both uppercase and lowercase letters.

Times New Roman

Bookman Old Style

Myriad

*Lucida Calligraphy*

Arial

Optima

## Surface Mounts

(Optional) Masonry mount with lead shield available. Upon request.



## Rosettes

(Optional) Rosettes are decorative covers for the screw heads, typically in each corner of bronze and aluminum plaques (included in price). Rosettes are available in 1/2", 3/4", 1" and 1-1/2" diameters. Rosettes with highlights are oxidized, aluminum rosettes are bead blasted. Screw heads are painted to match plaque background.



R-1



R-2



R-3



R-4

1" & 1-1/2" only



R-5



R-6



R-7

1" & 1-1/2" only

## Stake & Post Mounts

### Garden Stake Mount (Type E)

Machine screws through 5/16" thick black anodized stakes into back of plaque. Maximum plaque size is 12" x 8" for one stake or 20" x 8" for two stakes. Minimum plaque height is 4"



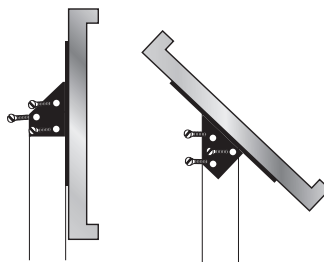
### Post Cap Mount (Type R)

Cast as part of an aluminum or bronze plaque, the post cap mount is designed to fit on 1-1/2", 2" or 3" ID schedule 40 posts. Available on almost any custom plaque, single or double-sided, up to 30" x 30". Post sold separately. Please call for a quote.



### Post Mount (Type F)

Black painted aluminum brackets attach to back of plaque with machine screws. Aluminum square post bolts into bracket at a 45° or 90° angle. Plaques over 24" wide require two posts.



(6" minimum for 1" post.)

### Square post back mount

The square post back mount is meant to provide a free standing plaque mount for single sided plaques over 900 square inches. Using two or three steel posts that are 2" x 2", 3" x 3" or 4" x 4", plaques up to 36 sq ft can be free standing mounted.



### Square post side mount

The square post side mount is meant to provide a free standing plaque mount for single or double sided plaques over 900 square inches. Using two steel posts that are 2" x 2", 3" x 3" or 4" x 4", plaques up to 36 sq ft can be free standing mounted.







## HIGH DEFINITION



## Artistic Freedom With Precision Detail

Whether etched, laser engraved, cast in relief or giclée printed, Gemini has a number of options for producing plaques and panels with precise detail.

Chemical etching allows us to transfer the most complex artwork to brass, bronze, copper or stainless steel, and any image can be laser engraved on anodized aluminum or polished black granite. Gemini's PhotoRelief™ process is a seamless blend of casting and photography, which sculpts a photographic image into the base metal to add texture and contrast. Giclée printing, a durable inkjet printing method, adds permanence and durability to any work of art.

Gemini's high definition plaques and markers can turn your image into a piece that will be admired for generations.





1



6



2



4



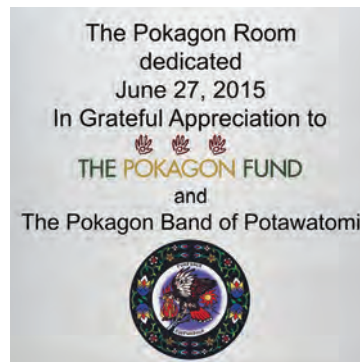
7



8



3



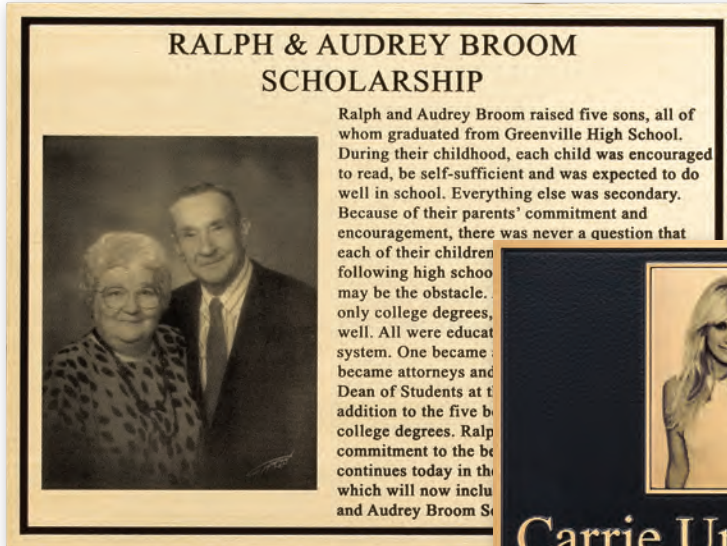
5



9

1. Precision tooled, random orbital bronze, black pebble texture, Giclée print in center, 12" x 12". 2. Etched copper, brushed finish, black fill, 15" x 15". 3. Etched brass, brushed finish, Giclée color print, 7" x 10". 4. Etched stainless steel, brushed finish, black fill, 7" x 19". 5. Precision tooled aluminum, recessed multi-color copy, Giclée color print logo, 10" x 10". 6. Etched stainless steel, brushed finish, black fill, 6" x 5". 7. Reversed etched stainless steel, brushed finish, black fill, 18" diameter. 8. Etched stainless steel, brushed finish, blue fill, 9" diameter. 9. Giclée full color print, aluminum panel, 7" x 10".





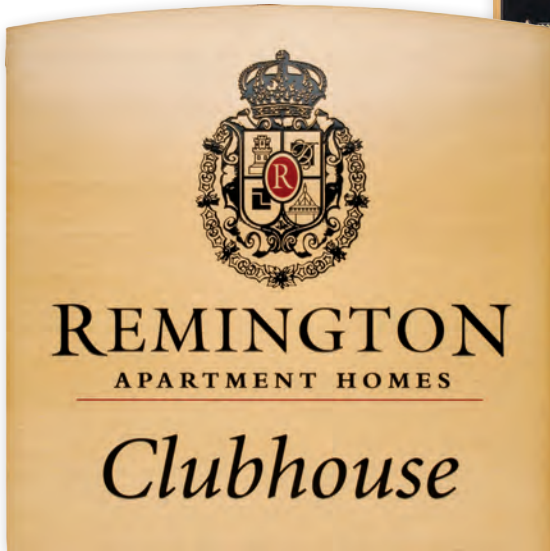
1



3



2



4



5

- 1. Brushed brass, etched text and halftone portrait, 20" x 15"
- 2. Cast bronze, brushed finish, etched portrait insert and graphic, black stipple texture, single line border, 15" x 20"
- 3. Brushed bronze, etched text and halftone portrait, 12" x 12"
- 4. Brushed brass, etched text and complex line art, black and red fill, 15" x 15"
- 5. Laser engraved polished black granite, complex line art, 8" x 8"





### Breathtaking Depth and Detail

Gemini's PhotoRelief™ process is a seamless blend of casting and photography, which actually sculpts a photographic image into the base metal — either bronze or aluminum — to add texture and bring out the contrast in the picture. Oxidizing technologies and the use of giclée are techniques that further enhance the PhotoRelief effect.

This groundbreaking process results in superb plaques, memorials and historical markers that are the envy of the sign and recognition industry.

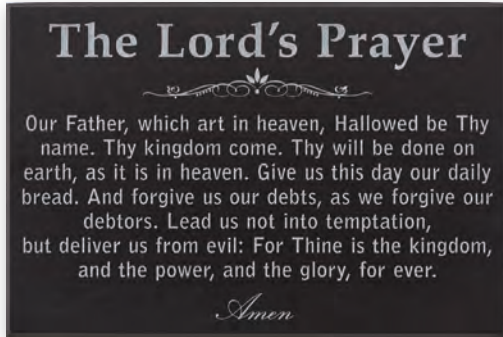


1. Full-color PhotoRelief, giclée on aluminum, 36" x 24" 2. Bronze PhotoRelief, 18" x 13" 3. Brushed black anodized aluminum, laser engraved text and halftone image, 20" x 10" 4. Brushed stainless steel, etched halftone image, 13" x 10"



## Laser Engraved Anodized Aluminum

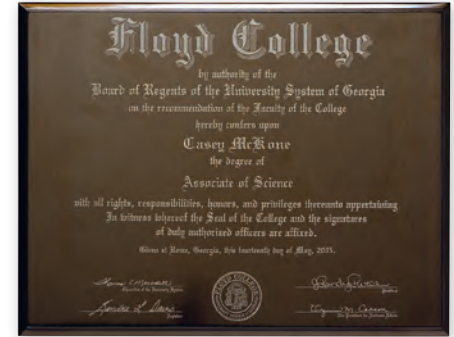
Gemini uses 1/4" thick premium 5052 aluminum alloy, and laser cuts your shape or size prior to anodizing. Your selected anodized color is then embedded into the aluminum according to ANSI specifications and your plaque artwork is laser engraved onto the surface, ablating the aluminum thousandths of an inch deep to provide a contrast that has a look unique to this product line. NO paint fill available.



Dark Bronze Anodized

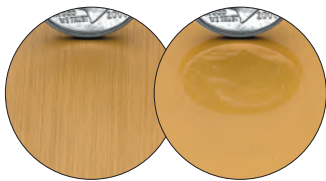


Gold Anodized



Polished Medium Bronze Anodized

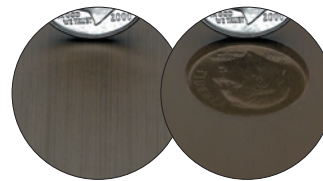
### Standard Anodized Colors



Gold Anodized Polished Gold Anodized



Black Anodized Polished Black Anodized



Medium Bronze Anodized Polished Medium Bronze Anodized



Dark Bronze Anodized Polished Dark Bronze Anodized

## Laser Engraved Polished Black Granite

Gemini can engrave your artwork or copy onto polished black granite, which is suitable for interior or exterior applications. Choose from 11 common shapes and sizes for the base material. Utilize the six rectangle or square sizes in tandem to produce artwork over a larger surface area than our maximum single piece size of 18" x 24". Double face tape or plain mount only.

### Laser Engraved Granite

SHAPE	SIZE
Square	4.25" x 4.25
Square	12" x 12"
Rectangle	5" x 7"
Rectangle	8.5" x 11"
Rectangle	12" x 24"
Rectangle	18" x 24"
Round Beveled	4"
Round Beveled	6"
Heart	8"
Oval	5" x 7"
Oval	8.5" x 11"



## Etched Graphics Options



### RECESSED GRAPHICS (STANDARD):

The standard on all Gemini etched plaques is recessed text and graphics that are paint-filled.



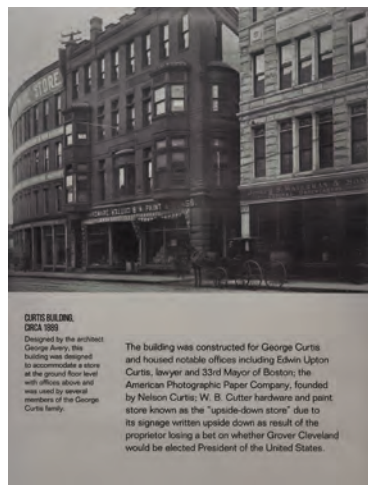
### RAISED GRAPHICS:

Raised text or graphics means the background will be painted, leaving the text or graphics in the alloy color. (There are stroke and artwork limitations with raised graphics.)



### LINE ART:

A sketch or drawing can be etched with fabulous results by reproducing a black and white line drawing. Since no halftone screen is used in the process, the fine lines are expertly captured in exquisite detail. Designed for indoor applications and suitable for some outdoor applications.



### PHOTOGRAPHY:

Etched photos are created with halftone images, which resemble newspaper photographs and have visible dot patterns. The dots are filled with black ink to contrast with the brushed metal finish. High contrast photographs work best for etched images.



### METAL IMAGE:

The Metal Image process offers greater detail than chemical etching. The porcelainized stainless steel is impervious to nearly all conditions, and the process is less expensive than etching, with a faster turnaround time.

Alloy C304 / Optional Alloy 316  
Only black copy or design is available.

1. Etched Stainless Steel, recessed graphics, 12" diameter
2. Etched Stainless Steel, raised graphics, 12" diameter
3. Etched Brass, recessed graphics with line art, 16" x 14"
4. Etched Bronze, recessed graphics with photo etch, 6" x 8"



## Etched Mounting Options



### Stud Mount (Blind Mount)

All etched plaques 1/4" thick and thicker are drilled and tapped.



### Stud Boss Mount (Blind Mount)

Plaques thinner than 1/4" can be stud mounted with welded stud bosses.



Image of welded boss



### Double Face Tape Mount (Blind Mount)

Strips of very high bond tape are applied to the back of the plaque. Interior use only.



### Through-hole Mount (Screw Mount)

Holes are drilled through the surface of the plaque. Specify screw size and if the holes should be countersunk. (Plaques 1/16" thick cannot be countersunk and will include round head screws.)

## Edges Painted edges are standard.



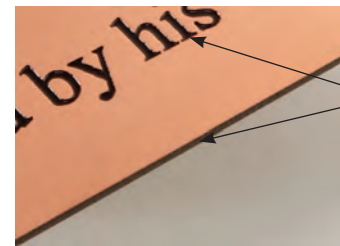
### SQUARE EDGE (STANDARD):

The standard edge on an etched plaque is a straight edge (90°).



### BEVEL EDGE:

A 41° bevel is applied to the edge at one-half the material thickness. Bevel edges are not available on 1/16" thick material.



Edge color matches fill color.

Etched panels are an excellent choice for displays and exhibits that feature lots of information and require photographic detail.

The El Paso & Southwestern Railroad historical markers, El Paso, Texas. Etched stainless steel, 15" x 15" (one in a series of panels in various sizes).





## WAYFINDING & ADA



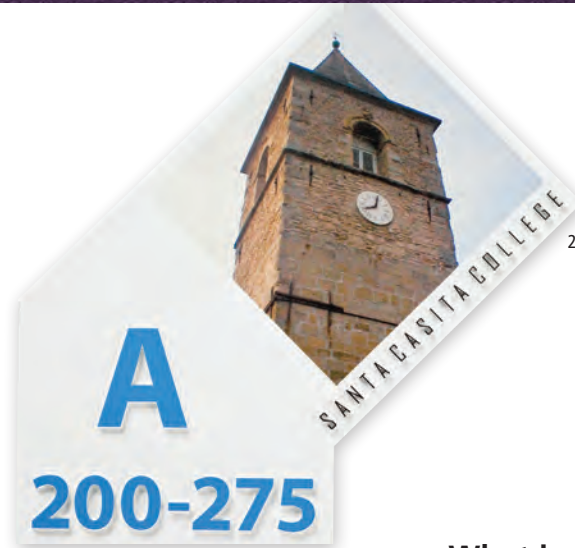
### The Highest Quality in ADA Signage

All of Gemini's ADA/wayfinding plaques are designed and manufactured to meet ADA requirements — and all are made from solid metal in order to provide a superior product that will not chip or crack. You can choose from base metal, painted colors or up to 1200 dpi photographic images for the surfaces of your plaques.

Gemini's patent-pending ADA process does not use loose beads for the Braille component or rely on imperfect, noncompliant castings. The result is a breathtaking example of how effectively designed ADA plaques don't have to be a distraction from a project's overall beauty, but instead can actually enhance it.



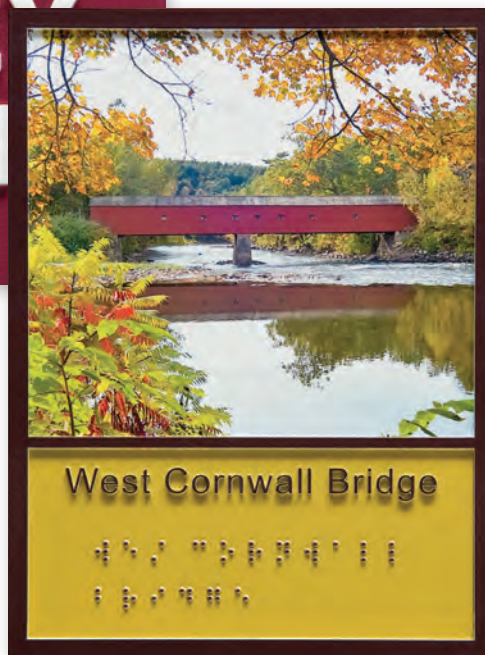




**What is Giclée?**

Giclée is the term for high quality, high-resolution inkjet printing, originally used in the creation of fine art prints on paper or canvas. With the introduction of UV-cured, non-elastic inks, Gemini has expanded the base material options to include metal or Lexan™ panels. Abrasion-resistant clear coating increases durability.

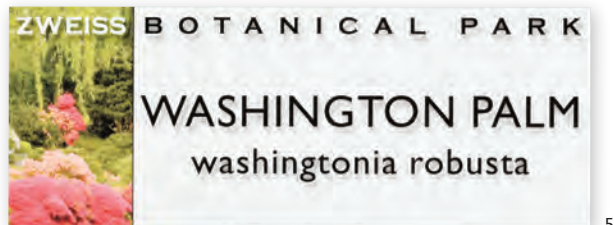
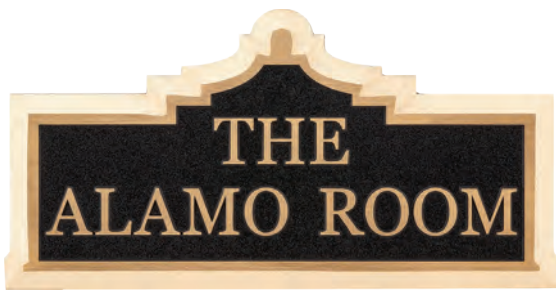
Giclée panels are an ideal solution for exhibits, displays and inserts for architectural plaques, and are excellent for all indoor applications.



1. Full-color giclée print on aluminum, raised painted letters, 7" x 9" 2. Full-color giclée print on aluminum, raised painted letters, custom shape, 8" x 8" 3. Full-color giclée on aluminum, raised painted letters and Braille, 6" x 8" 4. Full-color giclée print on aluminum, raised painted letters and Braille, custom shape, 6" x 8" 5. Full-color giclée on aluminum, raised painted letters, 13" x 6"

## Wayfinding/ADA Plaque Features

When you consider a wayfinding/ADA plaque's desired function, regulatory compliance issues and budgetary constraints, designing an attractive plaque may seem like a daunting task. It doesn't have to be. Gemini's custom capabilities provide a flexible array of design possibilities. Different colors, patterns, sizes and special features can be combined to create signs that are functional and compliant, while coordinating with the surrounding architecture and design.



### CUSTOM SHAPES

A truly custom product should not be placed in a cookie cutter shape. Gemini gives you the option to design not only the image and color of your wayfinding solutions, but also the overall shape of the individual plaque. Besides custom shapes, Gemini also offers features such as room use sliders and changeable name plates. Contact us to find out how we can help you develop a custom plaque perfectly suited for your needs.

### FULL-COLOR CAPABILITY

High-resolution, full-color printing can deliver a product that is completely customized for your application. The only limitation is the quality of the image provided for reproduction.

1. Full color aluminum with raised painted letters, 8" x 6" 2. Full-color giclée print on aluminum, raised painted letters, custom shape, 10" x 10" 3. Precision tooled bronze, single line wide bevel border, black stipple texture, 10" x 5" 4. Full-color giclée print on aluminum, raised painted letters, 6" x 7" 5. Full-color giclée print on aluminum, raised painted letters, 16" x 6"





**ALL-METAL,  
ONE-PIECE CONSTRUCTION**

Gemini wayfinding/ADA plaques feature one-piece, all-metal construction. This means that the copy, Braille and design elements are all part of the body of the plaque. Unlike plastic wayfinding solutions, Gemini's products will never chip, crack or have missing Braille indicia or lettering.

**MEETING ADA  
REQUIREMENTS**

The Americans with Disabilities Act (ADA), which became law in 1993, is intended to prevent discrimination based on disability. Standards for wayfinding architectural signage are spelled out in the ADA Accessibility Guidelines.



The use of Braille on signage for the visually impaired is well-known. The guidelines also require non-glare backgrounds and characters, easy-to-read typefaces, high dark-to-light contrast and the use of standardized symbols.

Gemini's customer service staff is well-versed in ADA compliance issues and ready to help you with your next project.



3



4



5

**BRUSHED METAL FINISH**

One of the main advantages of Gemini's wayfinding/ADA plaques is the ability to have a raised brushed finish. This creates an

extremely high-end, classic appearance that is compatible with the decor and other architectural plaques used in the project.



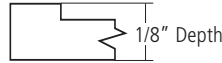
6



7

1. Bronze, raised brushed copy, single line border, brown background with Braille, 5" x 8" 2. Aluminum, blue painted background, raised painted letters, artwork and Braille, 6" x 8" 3. Aluminum, black painted background, raised painted letters, artwork and Braille, 6" x 8" 4. Bronze, raised brushed copy, red painted background with Braille, 9" x 8" 5. Bronze, raised brushed letters and artwork, black background with Braille, 20" x 8" 6 & 7. Standard ADA plaques, brushed aluminum with one-color painted background, 7" x 8.5"

## Thin Gauge Wayfinding/ADA



### ALL-METAL, ONE-PIECE CONSTRUCTION:

Gemini wayfinding/ADA plaques feature one-piece, all-metal construction, where the copy, Braille, and emblem or design elements are all integral to the body of the plaque. Unlike photopolymer or other plastic wayfinding solutions, Gemini's products will never chip, crack or have missing Braille indicia or lettering, resulting in an extremely vandal-resistant plaque.



### FULL-COLOR CAPABILITY:

The addition of high-resolution, full-color printing delivers a product that is completely customizable for your application.



### BRUSHED METAL FINISH:

Another feature Gemini offers is the option for raised brushed copy. The brushed finish will vary depending on the base metal chosen. Brushed raised copy allows for an extremely high-end, classic appearance that can match elements of the decor or other architectural plaques used on the project. (This effect is not possible when using plastics for the base material.)



### CUSTOM SHAPES:

A truly custom product should not be placed in a cookie cutter shape: Gemini gives you the option to design not only the image and color of your wayfinding solutions, but also the overall shape of the individual plaques.



### BRUSHED COPY WITH PAINTED BACKGROUND:

Standard thin gauge wayfinding plaques feature raised brushed copy in the metal of your choice: aluminum, brass or bronze. Background colors can be chosen from any of Gemini's standard paint colors (darker background colors produce superior results). Choose from any of our standard plaque background textures: leatherette, stipple or sand.

Raised Brushed Aluminum Copy, Black Leatherette Background

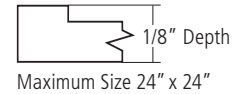




Raised White Painted Copy,  
Black Sand Background

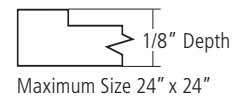
### Painted Copy with Painted Background

Painted copy, thin gauge wayfinding plaques are one-piece aluminum construction with raised painted copy against a painted background. Both colors can be chosen from any of Gemini's standard paint colors (darker background colors produce superior results). Pricing includes one raised copy color and one background color. Choose from any of our standard plaque background textures: leatherette, stipple or sand.



### Full-color Aluminum

Why settle for mediocre when you can have the best? These all-metal ADA plaques have your 1200 dpi full-color image as the background for any ADA / wayfinding application. The raised painted copy can be virtually any color, but colors should provide sufficient contrast to meet ADA regulations for visibility. These high-end plaques come with a vandal-resistant powdercoat that protects the image and the copy. Gemini warrants these products for interior use, although they will last under most moderate weathering conditions.



### Full-color Giclée Panels

For use in wayfinding where Braille or raised copy is not required, these panels have your 1200 dpi full-color image printed on Lexan, aluminum, brass, bronze or stainless steel — simply choose your material, thickness and shape, and supply a high-quality image. These high-end panels come with a vandal-resistant clear coat that protects the image. Gemini warrants these products for interior use, although they will last under most moderate weathering conditions.



Maximum Aluminum Size 48" x 96"  
Maximum Bronze or Brass Size 36" x 60"  
Maximum Stainless Steel Size 48" x 96"  
Maximum Lexan™ Size 48" x 96"

Bronze, stainless steel or brass add 30%.  
Additional gauges available.

Giclée on Lexan™ may be printed on either first or second surface.

## Standard ADA Plaques

Gemini ADA directional signage offers beauty, style and compliance. Plaques are available in the standard 7" x 8.5" x 0.25" size with a stipple or sand background, or in your own custom design. Don't let ADA signage requirements be an eyesore — order solid aluminum, bronze and brass ADA-compliant plaques from Gemini. Unlike other ADA-compliant products, Gemini's patent-pending process does not use loose beads for the Braille component or rely on imperfect, non-compliant castings. Like all our plaques, they are perfect every time.

For indoor applications, double face tape can be substituted at no additional charge.

California ADA also available. Please call for a quote.



Style A



Style B



Style C



Style D



Style E



Style F



Style G



Style H



Style I



Style J



Style K



Style L

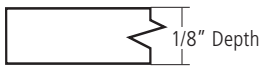


## Full Color Giclée Panels & Inserts

Giclée (pronounced "zhee-clay") is the term for high quality reproductions of art using high-resolution inkjet printers. Gemini can reproduce your images on standalone panels or as inserts into your architectural plaques. Using UV-cured, 4-color, non-elastic inks at up to 1200 dpi resolution, we can print your image as an accent for any of your recognition, wayfinding or signage needs. The reproduced image will show any imperfections found in the original image, and can only be reproduced at the same resolution as the original image.

Available in sizes up to 4' x 8' (up to 24" x 24" with raised copy or border in 1/8" metal), these giclée panels are intended for any exhibit or display uses where more permanency is required than traditional digital printing. Gemini can integrate raised borders, copy or other graphical elements that you can blend with your image to produce stunning results.

The combination of our high-resolution printing, abrasion-resistant clear coat and premium base materials results in a picture perfect product that is excellent for all indoor applications and even some exterior ones.



Maximum Aluminum Size 48" x 96"  
 Maximum Bronze or Brass Size 36" x 60"  
 Maximum Stainless Steel Size 48" x 96"  
 Maximum Lexan™ Size 48" x 96"

Bronze, stainless steel or brass add 30%.  
 Additional gauges available.

Giclée on Lexan™ may be printed on either first or second surface.



## Beveled Edge Plaque Frames

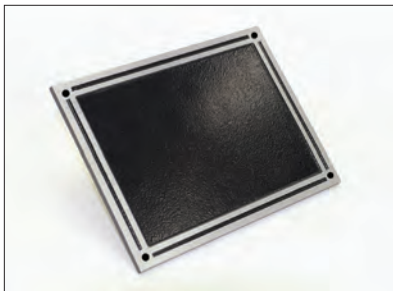
Enhance any Gemini plaque or your own plaque or panel with our plaque frames. These frames come in 14 common sizes, and with a minimum order we can manufacture sizes not listed. Frames are available in any standard baked enamel color. We use CAB (cellulose acetate butyrate) plastic, a non-petroleum-based plastic that is a renewable resource, as the base material. Suitable for interior or exterior use.



## Cast Aluminum Plaque Blanks

Aluminum plaques ready for engraving are cast by Gemini and ready to ship within days. Available with integral bracket for rod mount (rod sold separately) or with through-hole mount (including screws), they are manufactured in three different sizes. These plaques are a low-cost option to satisfy customers that require an all-metal plaque.

**Exterior installations:** As Sign Blanks are clear coated to protect against corrosion, it is recommended that a light clear coat be sprayed on the plaque face, after engraving.



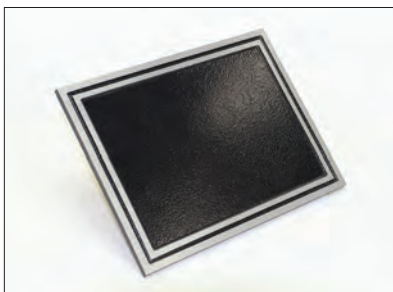
Through-hole Mount



Engraved Example



Aluminum Rod Shown With Plaque



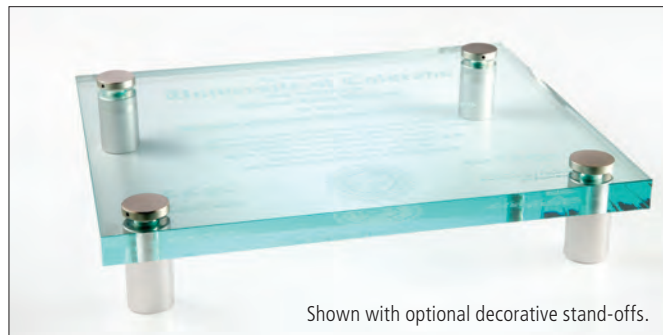
No Through-holes



## Cast Acrylic Sign Blanks

AVAILABLE IN 1/4", 3/8", 1/2" & 3/4" THICKNESSES

Cast acrylic blanks for laser engraving are available from Gemini at a cost-effective price. Unless otherwise specified, rectangular with smooth edges is the standard shape. Gemini can custom cut nearly any shape or design for the same price with approval of artwork.



Shown with optional decorative stand-offs.

## Decorative Stand-Off Mounts

Premium anodized aluminum stand-offs are excellent for installing plaques, plates and awards. Choose from either 1/2" or 1" diameter decorative caps, in either 3/4" or 1-1/2" stand-offs. Sold in sets of four, which include four stand-offs, four threaded caps, four nylon washers and one tightening wrench.

Decorative stand-offs are only available in clear anodized when sold separately. However, when sold with Gemini products, stand-offs may be painted any standard Gemini color.



### 1/2" Diameter Stand-offs



3/4" Stand-off



3/4" Stand-off



1-1/2" Stand-off



1-1/2" Stand-off

Decorative stand-off mounts are available as a mounting option with many Gemini products at an additional charge.

## OUR LIFETIME GUARANTEE

Gemini guarantees all of our products for life. That means that should a product fade, break or contain any defect, we will refinish or replace the defective materials at no cost to you, as long as the plaque is installed in its original location.

All Gemini products are designed to last a lifetime. We test all our materials and finishes, refine our coating technology, and deliver a product that we know will last much longer than the life of any other product you may install. From experience in the field and from our test lab results, we know that our products will last in excess of 10 years without any noticeable degradation in appearance. And we know, from many installations around the world, that many of our products last longer than that.

Please note that our guarantee applies to defective material only, as described in our warranty statement below.



### THIS IMPORTANT NOTICE TO PURCHASER APPLIES TO ALL GEMINI PRODUCTS

The following warranty is in lieu of all warranties expressed or implied. Specifically, Seller and Manufacturer disclaims any warranty of merchant-ability or of fitness for a particular purpose and manufacturer/seller's only obligation shall be to replace such quantity of the product proved to be defective. Neither seller nor manufacturer shall be liable for any injury, loss or damage, direct or consequential, arising out of the use of or the inability to use the product. Before using, user shall determine the suitability of the product for his or her intended use and user assumes all risk and liability whatsoever in connection therewith. The foregoing may not be altered except by an agreement signed by officers of seller and manufacturer.





## FREQUENTLY ASKED QUESTIONS

**Q: Is the mounting hardware included with stakes and posts?**

**A:** Yes.

**Q: What art files are acceptable?**

**A:** Gemini's systems are IBM compatible. The best files to send us are Illustrator (.ai, .eps or .pdf), Corel (.cdr), Gerber (.plt), Flexi (.fs), or Signlab (.eps). Large files (over 9MB) can be uploaded at GeminiSignProducts.com

*Please be sure to convert to "curves" or "paths" before sending. These files can be sent to [plaques@GeminiSignProducts.com](mailto:plaques@GeminiSignProducts.com).*

**Q: What is the standard Gemini plaque clear coat?**

**A:** Semi-gloss, which is 15% matte. Matte and gloss are also available. There is no extra charge for any of our clear coats.

**Q: Does Gemini offer "rush" orders for an extra charge?**

**A:** No. Typically production for standard plaques takes eight working days after layout approval is signed. Customers can rush their shipping with expedited freight charges.

**Q: What does Lifetime Guarantee mean?**

**A:** Gemini guarantees all of its products for life. This means that should your plaque fade or contain any defect, we will refinish or replace the defective material at no cost to you, as long as the plaque is installed in its original location. Gemini will not cover your cost of removal, re-installation or any subsequent work done on the mounting surface.

*You can find more details about our guarantee at the bottom of the previous page.*

**Q: Does Gemini quote freight charges?**

**A:** Gemini offers guaranteed ground freight charges on most orders to better serve our customers. If you require rush shipping, please make a request when placing your order.

**Q: Are there charges for creating layouts?**

**A:** Gemini will create up to two layouts per order at no charge to our customers. If a third layout is requested, a charge will be applied.

**Q: What is Gemini's return policy?**

**A:** Most Gemini products are custom-made for specific applications. However, as a service to our customers, we offer a credit (within 6 months of order shipment) of up to 50% of the original net price for returns, \$500 max. Freight is not included in the credit.

**Q: What is the smallest letter that can be used?**

**A:** Using Gemini Times New Roman, Bookman Old Style or Myriad, minimum height is 1/4" for letters in all uppercase, 3/8" for text that uses both uppercase and lowercase letters.

## INSTALLATION TIPS

- › Plaques installed on stucco require spacers on studs
- › Gemini will not be able to warranty plaques that will be installed in ground or where they will be possibly walked on, as this has a greater risk of compromising the clear coat.



**ALL GEMINI PRODUCTS ARE GUARANTEED FOR LIFE.**



**GEMINI INCORPORATED**  
103 MENSING WAY  
CANNON FALLS, MN 55009-1143 USA  
1-877-877-2922  
[www.GeminiSignProducts.com](http://www.GeminiSignProducts.com)